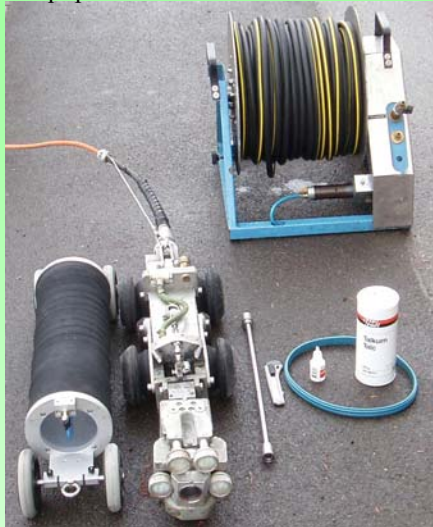


# POINT REPAIR SYSTEM - QUICK-LOCK!

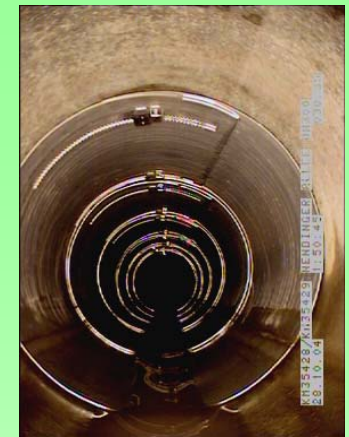
Quick-Lock sleeves; 6 to 24 inches pipe size



Equipment for installation



Sleeve with EPDM rubber gasket riding on packer. The camera tractor is pushing the packer to the troubled spot - no winching!



Picture shows several sleeves in line, overlapping.

## Description:

Quick-Lock is a strictly mechanical spot repair system for the partial repair on the inner pipe. It is applicable in common sewage, well and potable main water lines. The sleeve consists of a V4A stainless steel structural body, surrounded by an industrial grade EPDM compression rubber gasket. Key to this system is its patented locking mechanism, which, once locked gives the sleeve its structural strength and presses the rubber gasket against the inner pipe wall. *No additional resin is used!*

## Installation:

In order to install the Quick-Lock system the following equipment is necessary: Pan & tilt camera, modified camera tractor, (preferably steer able), hollow connecting bar, Quick-Lock air packer, air hose drum, compressor with air tank.

**RAUSCH offers specially designed trailer/truck-mounted turn-key units for the economic and easy installation of Quick-Lock sleeves, including a mainline camera, steer able tractor, controls unit, 500ft cable drum.**

When Quality, Performance & Innovation really matter.....CALL US!

Phone: 1-877-728-7241

FAX: (717) 709-1009



# rausch